

CLEANSEAL DOOR SYSTEMS

EXCEPTIONALLY CLEAN

FDA compliant single-ply polyester monofilament PVC coated curtain is non-porous, non-shedding, not absorptive, and non-permeable. All exposed metal is 304 (316L optional) stainless steel with #4 brushed finish. Sloped top shrouds completely enclose the curtain roll and drive assembly, reducing cleaning and maintenance. Easy wipe-down and quick inspection of side frames and guides, with nothing to disassemble, make this the ultimate roll-up door for clean manufacturing environments.

ULTIMATE DURABILITY

If accidentally impacted, the Quick Flex-Tab™ reset system allows the door to be snapped back into place in seconds with no tools or disassembly required. The simple low stress counterbalance system, integrated into the door design, helps balance the curtain and bottom rail assembly for smooth operation while reducing motor and gear train wear. The puncture-resistant fabric withstands continued impacts by pallet jacks or transfer carts. Heavy-duty stainless steel side frames and bottom bar further ensure long life for the door.

ADVANCED TECHNOLOGY

Our standard frequency inverter, in conjunction with encoder technology, allows for smooth and quiet soft start/soft stop door operation. The adjustable open and close speeds, to 50"/sec., allows the user to tailor the door operation to exacting module needs. Using flexible inverter technology, the user is allowed to choose from a variety of line side voltages, including 120 VAC single phase.

SUPERIOR PERFORMANCE

Available with a four-tiered performance system. A built-in recessed mini-beam system is designed to detect objects in the doors' path and initiate instant reversal. Sensitive SofTouch™ electronic reversing edge is installed in the curtain bottom rail assembly as well. Two-speed operation allows independent adjustments from 6" to 50" per second to the open and close speeds. To meet emergency egress (i.e., power failure), a manual release is standard on both sides of the door for easy opening.

UNMATCHED QUALIFICATIONS

With over 40 years of combined experience, our professional sales consulting team will ensure your mission-critical requirements, while maintaining our uncompromising dedication to quality and value added service.

MODEL 115S SPIRIT®

High-Speed Fabric Roll-Up Door System

MODEL 115S

Shown with optional vision panel



Bold Innovation. Superior Design. Unsurpassed Quality.

THE INDUSTRY'S UNPARALLELED DOOR SYSTEM OF CHOICE

CleanSeal's fabric roll-up door is designed, engineered and precision manufactured with over 20 years of experience partnering with the leading pharmaceutical companies and architects across the country. The Excel fabric roll-up door combines a clean, attractive finish, with a heavy-duty fabric curtain, stainless steel components, encoder technology and a simple breakaway system all manufactured for clean environment areas.

Using cutting-edge technology and exacting criteria for quality, these doors have surpassed market demands and exceed cGMP, FDA and EMEA requirements. Our quest for uncompromising quality, and our steadfast commitment to meet our customer's ever-changing expectations, is evident in one of the most durable and ultra-clean roll-up door systems available in today's highly controlled clean environment marketplace.

CleanSeal Doors | An ASI Technologies, Inc. Company
5848 North 95th Court | Milwaukee, WI 53225

PHONE: 414.464.6200 | FAX: 414.464.9863 | TOLL-FREE: 800.558.7068
www.cleansealdoors.com

MODEL 115S SPIRIT®

High-Speed Fabric Roll-Up Door System

MODEL 115S

DESIGN AND CONSTRUCTION

DOOR SIZES:

- Up to 12'0" x 14'0".
(For additional sizes - consult factory.)

PANEL CONSTRUCTION:

- .060 thick single-ply polyester monofilament PVC coated curtain material, FDA compliant.
- White or blue color curtain standard (other colors available upon request).
- A 28" high, full width, clear PVC vision panel available as an option.

FRAME AND SHROUD CONSTRUCTION:

- Side frames constructed with 12 ga., 304 #4 stainless steel with 16 ga. stainless steel covers.
- Side frames designed for maximum durability and easy wipe-down/wash-down with quick inspection.
- 16 ga., 304 #4 stainless steel sloped shrouds completely enclose the curtain roll and drive motor.

OPERATOR FEATURES:

- High performance, high efficiency 3/4 h.p. electric motor.
- Available in 120v single phase, or 208/230/460 three phase power.
- Adjustable open and close speeds up to 50"/sec. (42"/sec. open and 21"/sec. close std).

PERFORMANCE FEATURES:

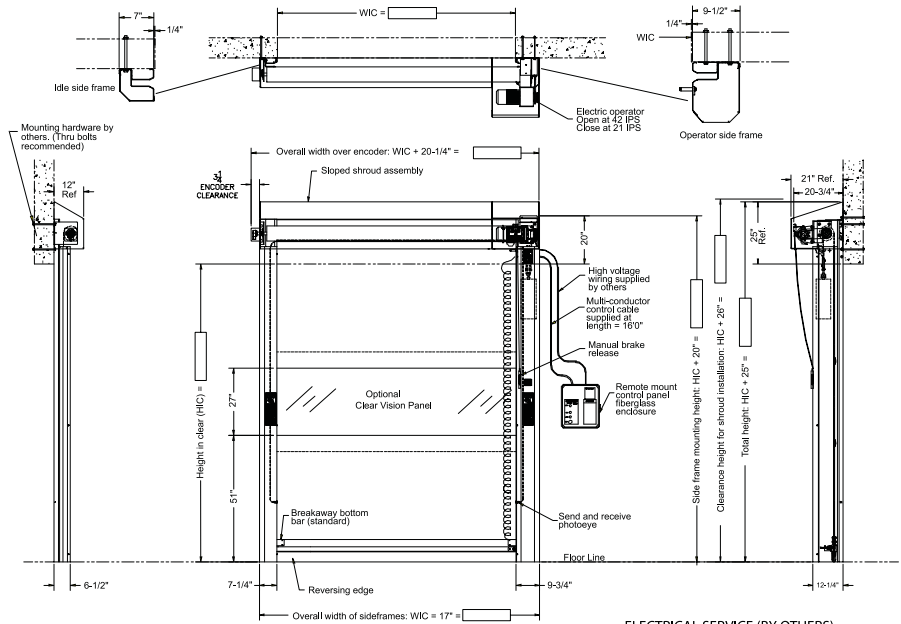
- Standard pushbutton to open and time delay to close.
- Recessed send and receive reversing photoeye in the side frames (std).
- SofTouch™ electronic instant reversing edge on bottom rail assembly (std).
- Simple counterbalance system enables door to fully open with a manual release mechanism on both sides of door.
- Quick Flex-Tab™ reset system allows the door panel to be snapped back into place in seconds after an impact.

OPTIONS:

- Vision panel 28" high across full width of curtain.
- Galvanized steel in lieu of stainless steel.
- Powder-coated side frames and shrouds.
- Custom designed interlocking system.
- Touchless activation devices.
- Explosion-proof operator and controls.
- Time delay close.
- Pre-announce to close kit (light/alarm/or combo).
- Pull cord actuator.
- Remote mount push buttons.
- Photoeye activation.
- Radio control activation-single or multi-channel transmitter.
- Loop detector system.
- Motion detector.

WARRANTY:

- One year limited warranty on all components.

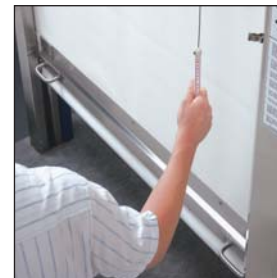


ELECTRICAL SERVICE (BY OTHERS)



STAINLESS STEEL SHROUD

Completely enclosed barrel and operator assembly, eliminating excessive cleaning.



DUAL SIDE MANUAL RELEASE

Permits instant manual operation during power failures or other emergencies.



BREAKAWAY FEATURE

Upon door impact, breakaway feature offers a quick and easy reset system that eliminates costly repairs. Sets back into place in seconds with no tools required.



APPLICATIONS

Ideal for material transfer airlocks, conveyor systems, packaging lines and washbays.



SPIRIT HD™

High Speed Exterior/Interior
Fabric Roll-Up Door

Data Sheet

Model 215

- High Efficiency 2 h.p. Electric Operator
- Breakaway Bottom Bar with Bolt-Action™ Reset System



:00
KNOCK-OUT



:15
RESET



:30
DRIVE THRU



FEATURES

- Door is designed to take a beating. If accidentally hit the simple Bolt-Action™ reset system enables curtain and bottom bar to be set back into place in under 30 seconds. No tools...No side covers to open...No costly damage...No downtime.
- Softouch™ reversing edge provides quick stop/reverse – with a sensitive response along the full width and travel of the door.
- Long-life counterweight system eliminates pulleys and tension springs in barrel.
- Reliable, low maintenance operator with an in-line, high efficiency electric gear brake motor. Gear train is sealed and lubricated for life.
- High speed operation of 36"/sec.
- Rugged PVC impregnated woven polyester fabric curtain (optional windows).
- Integral curtain stiffeners to withstand high winds and pressure differentials.
- Corrosion resistant galvanized side covers and bottom bar.
- Galvanized barrel and operator shroud (optional).
- PLC (Programmable Logic Controls).



MARATHON®
Industrial Doors for the Long Run

Model 215

DESIGN AND CONSTRUCTION

(Door designed for vehicular traffic)

DOOR SIZES

Minimum: 8' x 8'
Maximum: 20' x 20'

(Other sizes available - Consult factory)

PANEL CONSTRUCTION

- Two-ply PVC impregnated polyester woven fabric.
- Integral panel stiffeners.

OPERATION

Electric operation:

- Open/close at 36"/second.

OPERATOR

- In-line, high efficiency 2 h.p. electrical motor.
- NEMA-4 electrical enclosure.

WARRANTY

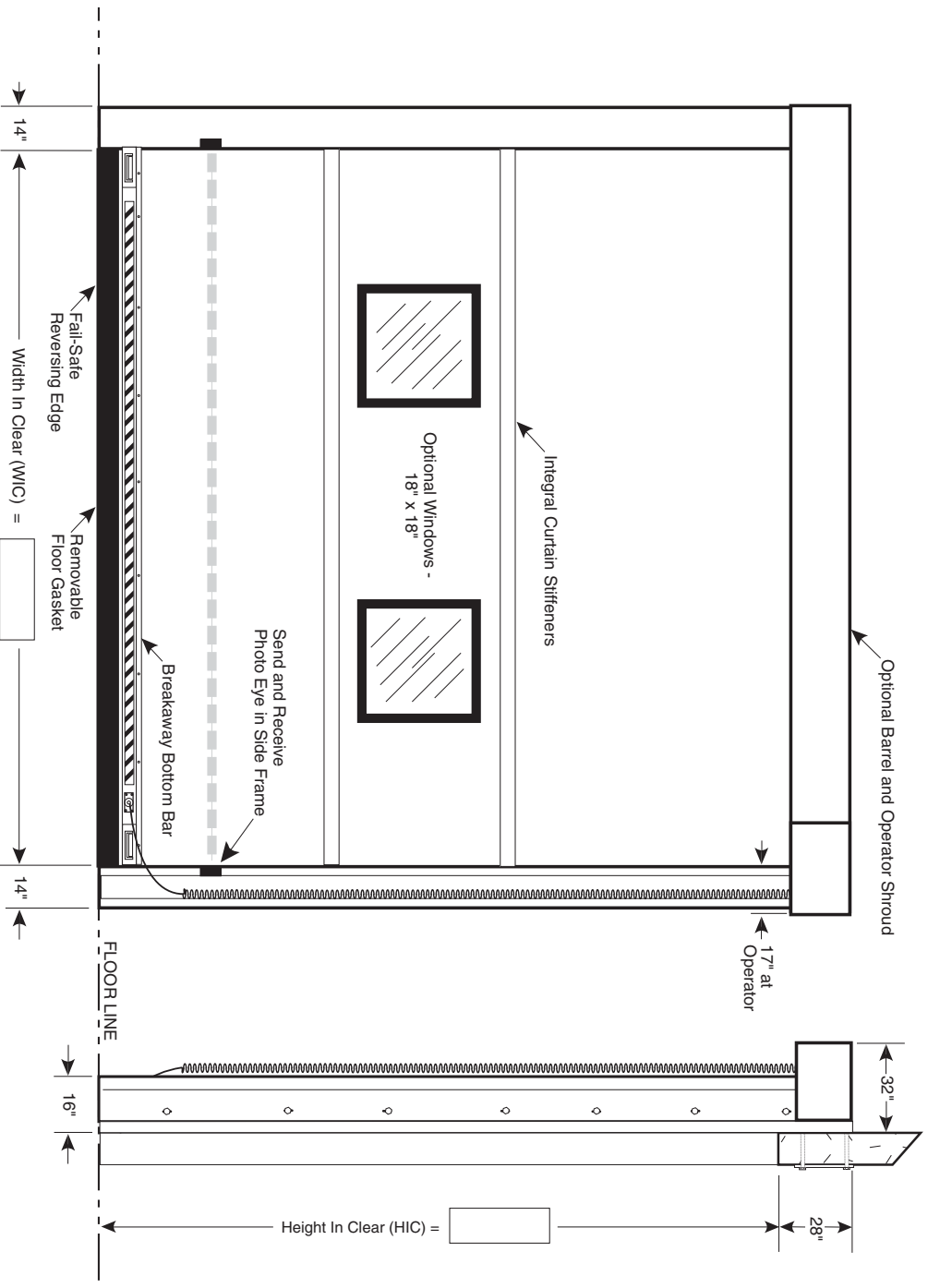
- One year on all components.

PERFORMANCE FEATURES

- Reversing edge for instant stop/reverse.
- Reversing photoeye.
- Breakaway bottom bar.

OPTIONS

- Pull cord actuator.
- Remote mount push buttons.
- Photoeyes - actuator or reversing.
- Radio control actuator-single or multiple channel transmitter.
- Loop detector system actuator.
- Motion detector.
- Time delay close.
- Barrel and operator shroud.
- 18" x 18" window.



For complete Architectural Specifications
contact ASI or visit www.asidoors.com

ASI
Technologies, Inc.



5848 N. 95th Court • Milwaukee, WI 53225 • (414) 464-6200 • (800) 558-7068 • FAX: (414) 464-9863 • www.asidoors.com

Consistent with our policy of continued product improvement, we reserve the right to change product specifications without notice or obligation.

SPiRiT PRO™

High Speed Interior
Fabric Roll-Up Door

Data Sheet

E-315 or M-315



Shown with Optional Vision Panel



**:00
SNAP-OUT**



**:15
SNAP-IN**



**:30
DRIVE AWAY**

FEATURES

- If accidentally hit---the simple Flex-Tab™ reset system enables curtain and bottom bar to be set back into place in under 30 seconds. No tools... no side covers to open...no costly door damage... no downtime.
- Pneumatic reversing edge provides quick stop & reverse - sensitive along the full width and travel of the door.
- Time delay close.
- Corrosion-resistant aluminum side guides and bottom bar (standard). Barrel and operator shroud (optional).
- Reliable, low maintenance operator with high efficiency worm drive electric brake motor available in 208, 230, or 460 volts, 3 phase power.
- High speed operation of 36"/second.
- Rugged PVC-impregnated woven polyester fabric curtain in standard safety orange or blue.
- Integral curtain stiffeners to withstand pressure differentials.
- Reversing photoeye.



Data Sheet E-315 or M-315

DESIGN AND CONSTRUCTION

(Door designed for vehicular traffic)

DOOR SIZES

- Minimum: 6' x 8'
- Maximum: 10' x 12'

(Other sizes available - Consult factory.)

PANEL CONSTRUCTION

- Two-ply PVC impregnated polyester woven fabric.
- Two integral panel stiffeners.

OPERATION

Electric operation:

- Open/close at 36"/second.

OPERATOR

- Low maintenance 3/4 h.p. electric motor, worm drive, and electric brake. NEMA-4 electrical enclosure.

WARRANTY

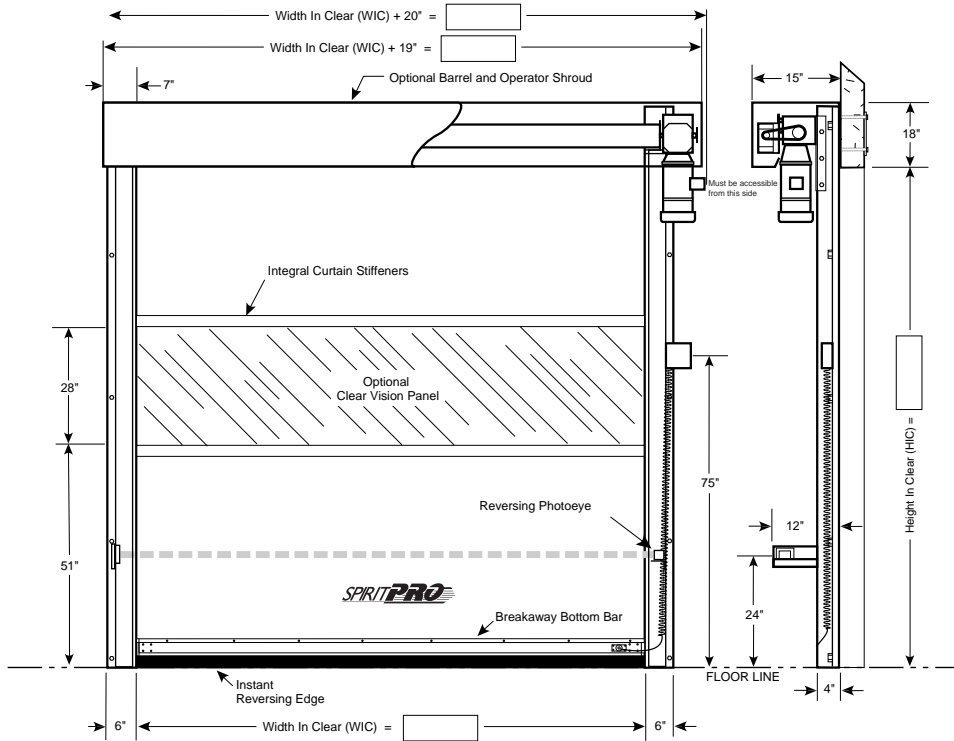
- One year on all components.

PERFORMANCE FEATURES

- Reversing edge.
- Reversing photoeye.
- Breakaway bottom bar.

OPTIONS

- Pull cord actuator.
- Remote mount push buttons.
- Photoeye actuator.
- Radio control actuator-single or multiple channel transmitter.
- Loop detector system actuator.
- Motion detector.
- Barrel and operator shroud.
- Full width window.
- 18" X 18" removable window.
- Electric reversing edge.



ARCHITECTURAL SPECIFICATIONS

Supply where indicated on plans Marathon® M-315 or Enviro® E-315 Fabric Roll-Up Door as manufactured by ASI Technologies, Inc., Milwaukee, Wisconsin, to fit door opening _____ wide by _____ high.

Doors shall be high speed fabric roll-up doors with a curtain constructed of PVC impregnated woven polyester fabric, with two integral curtain stiffeners.

Drive system to be powered by a 3/4 h.p., 208, 230 or 460 volts, 3 phase, 60 Hz. single speed electric motor, worm drive, and electric brake. Positive travel limit switches accessible at the operator to control door stopping distance. Electrical control panel to be in a NEMA-4 rated enclosure that includes OPEN, CLOSE and mushroom head STOP buttons, along with a lit reset button. Complete system to be assembled and ready for connection by others.

Door to have full perimeter seal. Door curtain to be equipped with an instant reversing edge, effective entire width of panel and along full door travel. Door to include reversing photoeye. Floor gasket to be removable for easy maintenance. Bottom bar to release from side frames in the event of vehicular collision, with automatic power cutoff to the operator - manually resettable at the control box. Carriers at both ends of the bar will be easily reset into the guides without tools.

ASI TECHNOLOGIES, INC.

5848 N. 95th Court • Milwaukee, WI 53225

(414) 464-6200 • (800) 558-7068 • FAX (414) 464-9863 • www.asidoors.com

315 2/2001 R

©2001, ASI TECHNOLOGIES, INC.
PRINTED IN U.S.A.