

INTERNATIONAL SHIPPING PALLETS

Automotive ■ Electronics ■ Appliance ■ Industrial Equipment

Solid wood packaging continues to pose unique challenges to companies conducting business globally. Issues include compliance with national and international laws, consideration of environmental threats and recycling opportunities, worker safety and delay or rejection of shipments at inspection points.

ISPM 15 is the newest challenge companies face when making global shipments. This regulation was introduced, and agreed to by many nations, to prevent the introduction of non-native, wood-borne pests. It requires the fumigation of all solid wood pallets.



The techniques used to adhere to this regulation are less than ideal. Chemicals are harmful to workers as well as the ozone while heat treatment is costly and degrades the wood, shortening the useful life of the pallet. Wood pallet disposal can also become a significant cost driver in international shipping with many wood pallets ending up in landfills after just one use.

Plastic pallets are a valuable cost-effective solution.

Plastic products are fully exempt from ISPM 15

Regulations, as they cannot harbor pests, mold or fungus. This exemption helps companies receive product on time, with minimal wait times at ports.

The plastic pallets shown are limited-use pallets that are at price points comparable to wood pallets. Their smooth surfaces and lack of sharp edges protect workers from injury. At the end of their useful life, these pallets are recyclable. Nearly 100% of the content is recoverable and available for use in new pallets.

ORBIS Plastic Pallets:

- >> Eliminate the need for Methyl Bromide fumigation
- >> Offer consistent weight and size for accurate transportation costs
- >> Are environmentally friendly and 100% recyclable
- >> Feature smooth, all plastic construction that reduce product damage (no exposed nails, rust, splinters or broken boards)
- >> Reduce packaging waste by eliminating wood pallet disposal
- >> Improve workplace safety with smooth design and stable stackability
- >> Eliminate the costs and associated documentation required for heat treating or fumigation



INTERNATIONAL SHIPPING PALLETS

Automotive ■ Electronics ■ Appliance ■ Industrial Equipment

What is ISPM 15 ?

To limit the entry and spread of quarantine pest through international trade, the International Plant Protection Convention (IPPC) adopted the International Standards for Phytosanitary Measures Guidelines for Regulating Wood Packaging Material in International Trade, commonly known as ISPM 15. According to the Guidelines for Regulating Wood Packaging Material in International Trade, ISPM 15 describes phytosanitary measures to reduce the risk of introduction and/or spread of quarantine pests associated with wood packaging materials made of coniferous and non-coniferous raw wood that are used in international trade. (includes dunnage)

What are the requirements of ISPM 15?

Countries are encouraged to accept wood packaging material that has been subjected to an approved measure (see next section). Procedures to verify that an approved measure, including the application of a globally recognized mark, should be in place in both the exporting and importing countries. Non-compliant wood packaging materials should be appropriately disposed. ¹

What are the approved measures?

- >> Heat treatment: Wood packaging material must undergo heat treatment that achieves a minimum wood core temperature of 56° Celsius for 30 minutes, or
- >> Fumigation: Wood packaging materials can be fumigated with methyl bromide, with specified temperature and time requirements. ¹
- >> Treated pallets must bear the approved marks of certification.

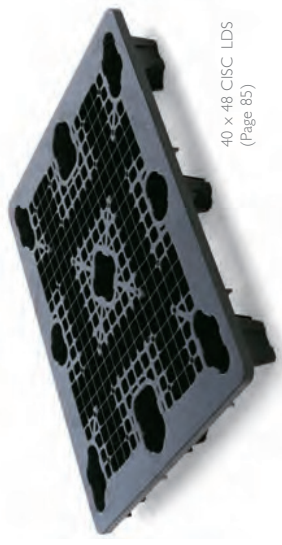
What are the risks of non-compliance?

If wood packaging materials do not carry the indicated mark at the point of entry, action can be taken in the form of treatment, disposal or refused entry. ¹ For more information, please visit www.ippc.int.



40 x 48 CICP Export Pallet
with optional runners (Page 85)

Available in
nestable and
stackable version!



40 x 48 CISC LDS
(Page 85)

Specifications All dimensions in inches unless specified.

Model	Outside Dimensions		Inside Dimensions		Height	Weight (lb.)	Nest Ratio	Load Capacity (lb.)		Truckload Quantity 53' Trailer
	L	W	L	W				Static	Dynamic	
40 x 48 CISC LDS	48.2	40.2	N/A	N/A	5.5	21.5	2.5:1	10,000	2,300	1,290
40 x 48 CISC LPD LDS	48.2	40.2	47.7	39.7	6.5*	21.5	2.5:1	10,000	2,300	1,290
40 x 48 CISC LPI LDS	48.2	40.2	46.1	37.8	6.5*	21.5	2.5:1	10,000	2,300	1,290
40 x 48 CICP	48.0	40.0	N/A	N/A	5.0	14.2	3.3:1	7,500	1,000	1,980
40 x 48 CICP with runners	48.0	40.0	N/A	N/A	5.75	17.8	N/A	7,500	1,750	540



* Height with lip

PALLETS

¹ Guidelines for Regulating Wood Packaging Material in International Trade, produced by the Secretariat of the International Plant Protection Convention. (IPPC)

EURO PALLETS

Food Processing & Distribution ■ Consumer Packaged Goods ■ Pharmaceutical ■ Beverage ■ Retail Display ■ Industrial



1200mm x 1000mm Stackable Pallet

- > Patented snap-fit design allows for on-site repair
- > Compatible with all palletizers, conveyors and automatic systems
- > Available in FDA approved material
- > Available in fire-retardant material
- > This heavy-duty pallet is designed to convey industrial products, and has standard (S) and reinforced (R) versions
- > Tapered 4-way entry
- > Options (p.99): Hot stamp, molded-in logo, grommets, bar coding, custom colors

Model	Dimensions (in/mm)			Weight (lb/kg)	Load Capacity (lb/kg)		Truckload Quantity 53' Trailer
	L	W	H		Static	Dynamic	
1200 x 1000 SuperPal	39.4	47.2	6.3	53.0	33,000	3,800	510
1200 x 1000 FM SuperPal	1000.7	1198.8	160.0	2.38	14850	1710	
	39.4	47.2	6.3	55.0	33,000	3,800	510
	1000.7	1198.8	160.0	2.38	14850	1710	

Available in truckload and above quantities only. This is a non-standard product that is produced outside the United States. Lead times may vary.



1090 x 1420 Stackable Pallet

- > Patented snap-fit design for on-site repair
- > Available in FDA approved material
- > Designed to convey filled beverage products, aluminum and steel cans, glass, plastic bottles and can ends and other rigid packages on many palletizers and conveyor systems
- > Available in 2 pallet heights
- > Tapered 4-way entry
- > Options (p.99): Hot stamp, molded-in logo, grommets, 9 or 12 post design available

Model	Dimensions (in/mm)			Weight (lb/kg)	Load Capacity (lb/kg)		Truckload Quantity 53' Trailer
	L	W	H		Static	Dynamic	
1090 x 1420 GlassPal	42.9	55.9	5.5	60.2	15,000	1,700	Call ORBIS
	1089.6	1419.9	139.7	27.09	6750	3802.5	
1090 x 1420 GlassPal	42.9	55.9	5.0	60.2	15,000	1,700	Call ORBIS
	1089.6	1419.9	139.7	27.09	6750	3802.5	

Available in truckload and above quantities only. This is a non-standard product that is produced outside of the United States. Lead times may vary.



Pictured: 1100 x 1200 BeerPal

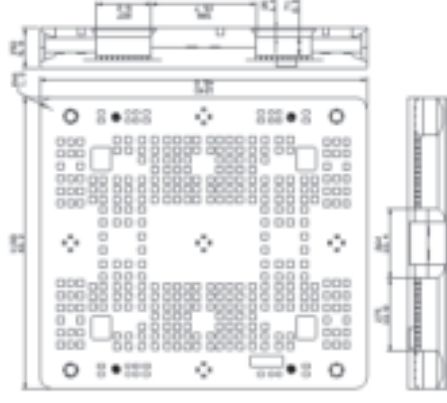
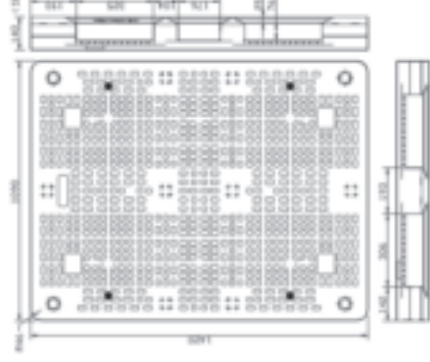
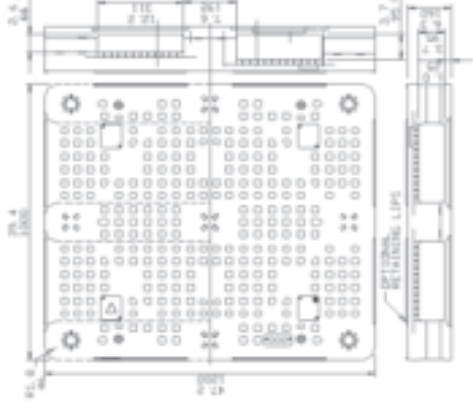
1100 x 1200 & 1100 x 1240 Stackable Pallet

- > Patented snap-fit design for on-site repair
- > Available in FDA approved material
- > Designed to convey filled beverage products, aluminum and steel cans, glass, plastic bottles and can ends and other rigid packages on many palletizers and conveyor systems
- > Impact resistant polypropylene material
- > Tapered 4-way entry
- > Options (p.99): Hot stamp, molded-in logo, grommets, reinforcing rods

Model	Dimensions (in/mm)			Weight (lb/kg)*	Load Capacity (lb/kg)		Truckload Quantity 53' Trailer
	L	W	H		Static	Dynamic	
1100 x 1200 BeerPal	43.3	47.2	5.9	58.0	33,000	4,400	504
	1099.8	1198.9	149.8	26.1	14,850	1,980	
1100 x 1240 BeerPal	43.3	48.8	5.9	58.0	33,000	4,400	504
	1099.8	1239.5	149.8	26.1	14,850	1,980	

* Weight without reinforcing rods.

Available in truckload and above quantities only.

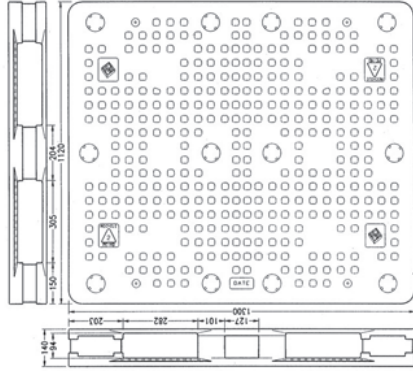


Drawing: 1100 x 1200 BeerPal



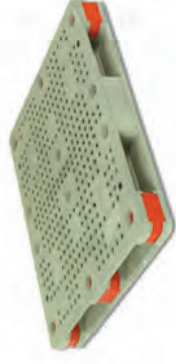
EURO PALLETS

Food Processing & Distribution ■ Consumer Packaged Goods ■ Pharmaceutical ■ Beverage ■ Retail Display ■ Industrial



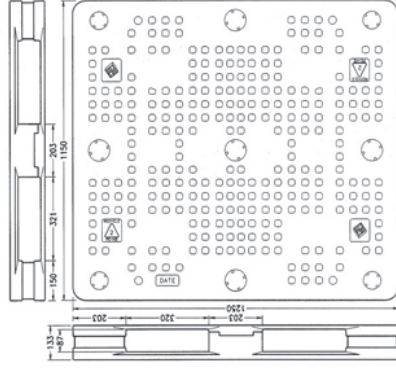
1120 x 1300 Stackable Pallet

- > Available in FDA approved material
- > Designed to convey filled beverage products, aluminum and steel cans, glass, plastic bottles and can ends and other rigid packages on many palletizers and conveyor systems
- > Recessed area for bar coding
- > Tapered 4-way entry
- > Options (p.99): Hot stamp, molded-in logo, grommets, full perimeter or rail base, 9 or 12 post design



Model	Dimensions (in/mm)			Weight (lb/kg)	Load Capacity (lb/kg)		Truckload Quantity
	L	W	H		Static	Dynamic	
1120 x 1300 BulkPal	44.1	51.2	5.1	49.5	10,000	1,500	53' Trailer
	1120.1	1300.5	129.5	22.28	4,500	675	Call ORBIS

Minimum order quantity requirement: 4,000
This is a non-standard product that is produced outside of the United States. Lead times may vary.



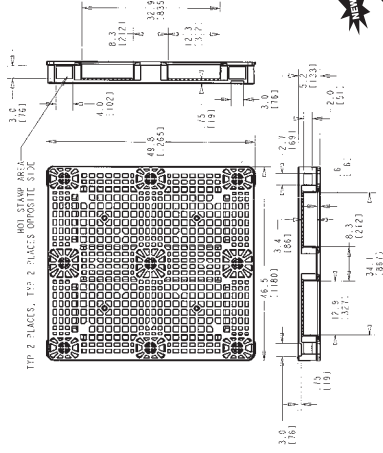
1150 x 1250 Stackable Pallet

- > Available in FDA approved material
- > Designed to convey filled beverage products, aluminum and steel cans, glass, plastic bottles and can ends and other rigid packages on many palletizer and conveyor systems
- > Also available in 1180 x 1250 footprint
- > Tapered 4-way entry
- > Options (p.99): Hot stamp, molded-in logo, grommets, bar coding



Model	Dimensions (in/mm)			Weight (lb/kg)	Load Capacity (lb/kg)		Truckload Quantity
	L	W	H		Static	Dynamic	
1150 x 1250 BulkPal (Repairable)	45.3	49.2	5.2	49.5	22,000	3,300	53' Trailer
	1150.6	1249.7	132.0	22.28	9900	1485	Call ORBIS
1180 x 1250 BulkPal (Repairable)	46.4	49.2	5.2	51.6	22,000	3,300	Call ORBIS
	1178.6	1249.7	132.0	23.2	9900	1485	Call ORBIS

Available in truckload and above quantities only.
This is a non-standard product that is produced outside of the United States. Lead times may vary.



1180 x 1265 Stackable Pallet

- > One-piece design
- > Available in FDA approved material
- > Designed to convey filled beverage products, aluminum and steel cans, glass, plastic bottles and can ends and other rigid packages on many palletizer and conveyor systems
- > Also available in 1180 x 1250 footprint
- > Tapered 4-way entry
- > Options (p.99): Hot stamp, molded-in logo, grommets, bar coding, custom colors



Model	Dimensions (in/mm)			Weight (lb/kg)	Load Capacity (lb/kg)		Truckload Quantity
	L	W	H		Static	Dynamic	
1180 x 1265 BulkPal	46.5	49.8	5.2	47.6	22,000	3,300	53' Trailer
	1180	1265	133	21.6	10,000	1,500	Call ORBIS
1180 x 1250 BulkPal	46.5	49.2	5.2	47.6	22,000	3,300	Call ORBIS
	1180	1250	133	21.6	10,000	1,500	Call ORBIS

Available in truckload and above quantities only.
This is a non-standard product that is produced outside of the United States. Lead times may vary.

Interested in recycling your plastic pallets at the end of their service life? "Recycle with ORBIS" is a convenient program designed to effectively recover, recycle and reprocess plastic pallets into other useful products. To learn more, contact your ORBIS Sales Representative.