

Attached Lid

Buckhorn offers Attached Lid Containers in many sizes and styles for shipping, picking and storage. Ideal for applications in distribution, grocery and general manufacturing, these containers deliver long-lasting, cost-saving performance.

- With lids open, Attached Lid Containers nest for maximum space usage in trucks, storerooms and on pallets
- Handle styles including ergonomic, closed and open (vary by model)
- Easy-to-clean interiors
- Injection-molded HDPE construction resists impact, moisture and most chemicals
- Use with temperatures of -20° to 120° F
- Options: Hot stamping, identification areas for labels and tags, RFID, card holders, special colors or other identification methods are available for container control program

INCREASING YOUR PRODUCTIVITY



DACO

MATERIAL HANDLING & PACKAGING SOLUTIONS

www.DACOcorp.com

800-345-3226



Buckhorn Attached Lid Containers are available in a wide range of popular sizes for any distribution requirement.

Attached Lid Containers

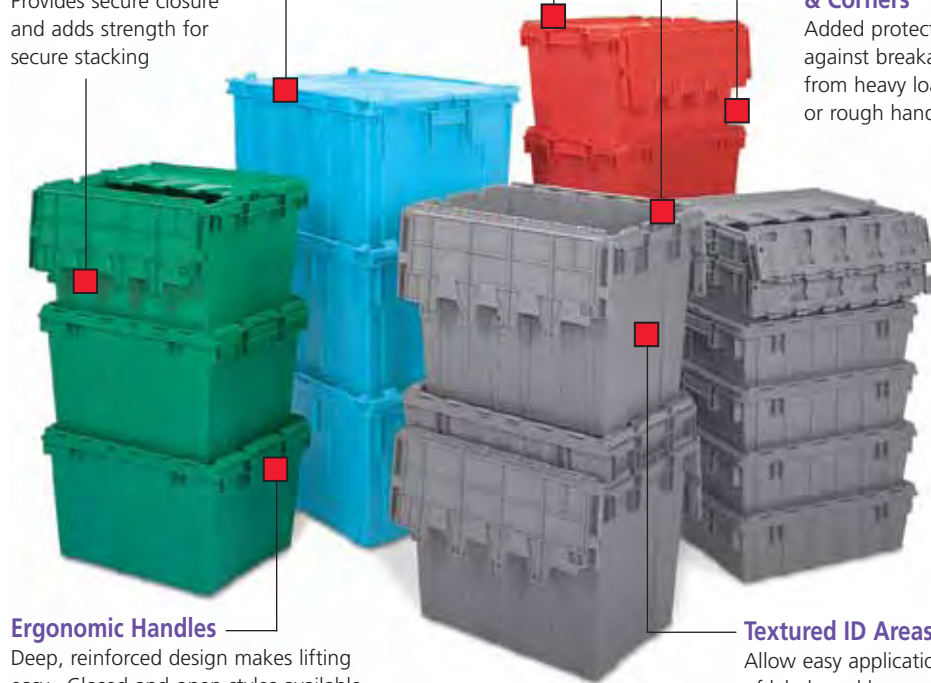
Steel Hinge Pins
Maximize stacking strength and are 100% recyclable

Heavy-Duty Continuous Hinges
Lid hinges are designed with inset ends for extra protection and long service life

Reinforced Security Tie Holes
Reinforced tie holes in both ends on most models fit security ties and tamper evident seals to secure lids for shipping and handling

Interlocking Fingers on Lids
Provides secure closure and adds strength for secure stacking

Reinforced Sides & Corners
Added protection against breakage from heavy loads or rough handling



Ergonomic Handles
Deep, reinforced design makes lifting easy. Closed and open styles available on some models

Textured ID Areas
Allow easy application/removal of labels and bar codes as container moves through the supply chain; located on lids and sides

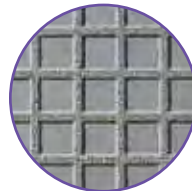
21" x 15" Attached Lid Container

Unique all-plastic "locking" hinge increases security and is recyclable without removing hinge pins (AA model only)

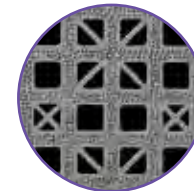


Various Bottom Styles

Many Buckhorn containers are available in a variety of bottom styles: solid bottoms provide security and prevent leakage; open bottoms and drain holes allow easy clean-up; solid textured bottoms offer maximum traction on conveyor systems



Solid-Textured



Open-Textured



Recessed Lid (AR)
Most containers feature recessed lids which create a 1/2" perimeter lip for secure stacking of loaded containers



Strapping Lid (AS)
Optional raised stops are available on some sizes for banding applications



Reinforcing Ribs on Lids
For added strength and rigidity to withstand heavy-load stacking in any environment

Attached Lid Container Specifications



AR20120702



AR21150902



AR21151202



AR21151702



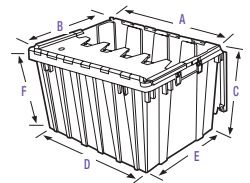
AF21150702
Bi-Fold Lid



AA21151202
All plastic hinges

Did You Know...?

The 21" x 15" x 9" container was designed for split case warehouse picking for shipment to retail.



Model No.	Description	Dimensions					Inside Usable Height H"(F)	Weight lbs.	Weight Capacity lbs.	Volume Cu. Ft.	Nesting Ratio	Lid Type	48' Truck Capacity Stacked	Capacity Nested	53' Truck Capacity Stacked	Capacity Nested
		L"(A)	Outside Top W"(B)	H"(C)	Inside Bottom L"(D)	W"(E)										
AR20120702	Solid/Textured Bottom	20	11.69	7.50	16.88	9.63	6.06	3.78	40	.61	3.0:1	(R)	3360	5616	3720	6480
	mm/kg/l	510	295	190	430	245	153	1.70	18	.017	—	—	—	—	—	—

(R) Recessed Lid

20" x 12" Containers

- Cube 40" x 40" pallets
- Stock Color: Light Gray

Model No.	Description	Dimensions					Inside Usable Height w/Lid S"(F)	Weight lbs.	Weight Capacity lbs.	Volume w/lid Cu. Ft. (S)	Nesting Ratio	Lid Type	48' Truck Capacity Stacked	Capacity Nested	53' Truck Capacity Stacked	Capacity Nested		
		L"(A)	Outside Top W"(B)	H"(C)	Inside Bottom L"(D)	W"(E)												
AR21150921	Open/Textured Bottom	21.75	15.25	9.63	18.38	13	8.13	—	5.29	60	1.22	—	4.3:1	(R)	1837	4452	1991	4872
	mm/kg/l	552	387	245	467	330	205	—	2.38	27	35	—	—	—	—	—	—	—
AR21150902	Solid/Textured Bottom	21.75	15.25	9.63	18.38	13	8.13	—	5.29	60	1.22	—	4.3:1	(R)	1837	4452	1991	4872
	mm/kg/l	552	387	245	467	330	205	—	2.38	27	35	—	—	—	—	—	—	—
AR21151221	Open/Textured Bottom	21.75	15.25	12.50	17.88	12.50	11.13	—	6.01	60	1.61	—	5:1	(R)	1336	3816	1448	4176
	mm/kg/l	552	387	318	455	320	285	—	2.70	27	46	—	—	—	—	—	—	—
AR21151202	Solid/Textured Bottom	21.75	15.25	12.50	17.88	12.50	11.13	—	6.01	60	1.61	—	5:1	(R)	1336	3816	1448	4176
	mm/kg/l	552	387	318	455	320	285	—	2.70	27	46	—	—	—	—	—	—	—
AR21151702	Solid/Textured Bottom	21.80	15.25	17	17.93	12.45	15.94	—	6.88	60	2.05	—	5.4:1	(R)	520	2208	600	3120
	mm/kg/l	553	387	431	455	316	404	—	3.21	27	58	—	—	—	—	—	—	—

(R) Recessed Lid Containers are available with bails and other optional features with minimum quantity order.

21" x 15" Containers

- Choose from 9", 12" and 17" heights
- 60 lb. capacity
- AR21151202 and AR21150902 available in Light Gray, Green

Model No.	Description	Dimensions					Inside Usable Height H"(F)	Weight lbs.	Weight Capacity lbs.	Volume Cu. Ft.	Nesting Ratio	Lid Type	48' Truck Capacity Stacked	Capacity Nested	53' Truck Capacity Stacked	Capacity Nested
		L"(A)	Outside Top W"(B)	H"(C)	Inside Bottom L"(D)	W"(E)										
AF21150702	Solid/Textured Bottom	21.50	15.25	6.63	18.38	12.75	5.25	4.70	60	78	2.21:1	(R)	2652	3120	2958	3360
	mm/kg/l	546	387	168	467	323	133	2.11	27	22	—	—	—	—	—	—

(R) Recessed Lid

21" x 15" Bi-Fold Containers

- Ideal for distribution of small orders up to .78 cubic feet
- Stock Color: Light Gray

Model No.	Description	Dimensions					Inside Usable Height H"(F)	Weight lbs.	Weight Capacity lbs.	Volume Cu. Ft.	Nesting Ratio	Lid Type	48' Truck Capacity Stacked	Capacity Nested	53' Truck Capacity Stacked	Capacity Nested
		L"(A)	Outside Top W"(B)	H"(C)	Inside Bottom L"(D)	W"(E)										
AA21151202	Attached Lid Container	21.75	15.25	12.50	17.88	12.50	11.13	6.01	60	1.61	5:1	(R)	1336	3816	1448	4176
	mm/kg/l	552	387	318	455	320	285	2.70	27	46	—	—	—	—	—	—

Optional smooth bottoms available. (R) Recessed Lid Gray is available for immediate shipment, other colors available with minimum quantity order.

Capacity is dependent upon application and use environment. Check with Buckhorn for suitability in your application. Specifications subject to change without notice. All dimensions are approximate.

[S] = In Stock Items



Attached Lid Container Specifications

Did You Know...?

Buckhorn's interlocking lid (patented design) is the strongest in the industry and helps to prevent containers from collapsing under stacked loads.



AS22131202



AR24201202



AR25151302
SecureTote™



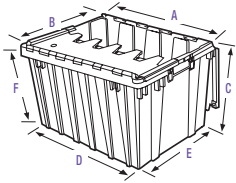
AR27171202



AS28211502



AS34242012



22" x 13" Containers

- Strapping lid provides optimum internal cube for greater payload capacity
- Stock Color: Light Gray

Model No.	Description	Dimensions					Inside Usable Height H"(F)	Weight lbs.	Weight Capacity lbs.	Volume Cu. Ft.	Nesting Ratio	Lid Type	48' Truck Stacked	Capacity Nested	53' Truck Stacked	Capacity Nested
		L"(A)	Outside Top W"(B)	H"(C)	L"(D)	Inside Bottom W"(E)										
AS22131221	Open/Textured Bottom	22.38	13	12.88	18.8	10.1	11.8	6.08	60	1.42	3.96:1	(S)	1400	4200	1568	4702
	mm/kg/l	567	330	327	483	254	298	2.73	27	40	—	—	—	—	—	—
S AS22131202	Solid/Textured Bottom	22.38	13	12.88	18.8	10.1	11.8	6.08	60	1.42	3.96:1	(S)	1400	4200	1568	4702
	Open Handholds	567	330	327	483	254	298	2.73	27	40	—	—	—	—	—	—

(S) Strapping Lid

24" x 20" Containers

- High capacity to reduce handling time
- Cubes standard 48" x 40" pallet - 4 per layer
- Stock Color: Light Gray

Model No.	Description	Dimensions					Inside Usable Height H"(F)	Weight lbs.	Weight Capacity lbs.	Volume w/lid		Nesting Ratio	Lid Type	48' Truck Stacked	Capacity Nested	53' Truck Stacked	Capacity Nested
		L"(A)	Outside Top W"(B)	H"(C)	L"(D)	Inside Bottom W"(E)				Cu. Ft. (R)	(S)						
S AR24201202	Recessed Lid/Solid Bottom	24	19.5	12.63	20.5	16.6	10.8	8.31	80	2.30	—	5.6:1	(R)	928	3360	1000	3840
	mm/kg/l	610	495	320	520	423	273	3.74	36	65	—	—	—	—	—	—	—

(R) Recessed Lid

25" x 15" SecureTote™

- Four reinforced tie holes in lids
- Stock Color: Dark Blue

Model No.	Description	Dimensions					Inside Usable Height H"(F)	Weight lbs.	Weight Capacity lbs.	Volume w/lid		Nesting Ratio	Lid Type	48' Truck Stacked	Capacity Nested	53' Truck Stacked	Capacity Nested
		L"(A)	Outside Top W"(B)	H"(C)	L"(D)	Inside Bottom W"(E)				Cu. Ft. (R)	(S)						
S AR25151302	Solid/Textured Bottom	24.50	15	13.19	20.95	12.17	11.75	7.5	50	1.9	—	4.2:1	(R)	800	2976	896	3224
	mm/kg/l	622	381	335	532	309	298	3.4	23	54	—	—	—	—	—	—	—

(R) Recessed Lid

Containers are available with bails and other optional features with minimum quantity order. Capacity is dependent upon application and use environment. Check with Buckhorn for suitability in your application. Specifications subject to change without notice. All dimensions are approximate.

S = In Stock Items



Model No.	Description	Dimensions						Weight lbs.	Weight Capacity lbs.	Volume Cu. Ft.	Nesting Ratio	Lid Type	48' Truck Stacked	Capacity Nested	53' Truck Stacked	Capacity Nested
		L"(A)	Outside Top W"(B)	H"(C)	Inside Bottom L"(D)	W"(E)	Height H"(F)									
[S] AR27171202	Solid/Textured Bottom	27	16.88	12.5	23.5	13.8	10.9	8.19	100	2.25	4.3:1	(R)	840	2914	920	3074
		685	430	320	600	350	278	3.72	45	64	—	—	—	—	—	—
AS27171202	Solid/Textured Bottom	27.13	16.88	12.5	23.5	13.8	11.4	8.19	100	2.34	4.3:1	(S)	840	2914	920	3074
		689	430	320	600	350	289	3.72	45	66	—	—	—	—	—	—

(R) Recessed Lid (S) Strapping Lid

27" x 17" Containers

- 12" height
- Ideal for long, bulky products
- AR27171202 available in Light Gray, Red, Green, Dark Blue

Model No.	Description	Dimensions						Weight lbs.	Weight Capacity lbs.	Volume Cu. Ft.	Nesting Ratio	Lid Type	48' Truck Stacked	Capacity Nested	53' Truck Stacked	Capacity Nested
		L"(A)	Outside Top W"(B)	H"(C)	Inside Bottom L"(D)	W"(E)	Height H"(F)									
[S] AS28211502	Solid/Textured Bottom	28	20.75	15.44	25	18	14	12.6	100	3.82	2.79:1	(S)	564	1408	624	1496
		mm/kg/l	710	530	390	635	460	355	5.65	45	108	—	—	—	—	—
[S] AS34242012	Solid/Smooth Bottom	34	24	19.63	29.9	19.5	18.1	19.0	100	6.62	2.74:1	(S)	345	720	390	816
	Open Handholds	865	610	500	760	495	460	8.54	45	530	—	—	—	—	—	

(S) Strapping Lid

28" x 21" 34" x 24" Containers

- Designed for large-size distribution applications
- Stock Color: Light Gray

Capacity is dependent upon application and use environment. Check with Buckhorn for suitability in your application. Specifications subject to change without notice. All dimensions are approximate.

Buckhorn Attached Lid Containers Pack Cost Saving Advantages

Address the challenges of delivering your valuable products safely to market with a program of reusable packaging from Buckhorn.

To learn more about the benefits of Buckhorn Attached Lid Containers, call (800) 543-4454 today!



Identification

Hot stamped logos, card holders and RFID options provide quick and easy tracing and identification of sensitive and valuable products. See page 54 for more labeling options.



Cleanliness

Plastic containers and pallets are easy to clean, molded in FDA-approved resins and will not splinter, shed fibers, or absorb moisture and odors.



Automation Capability

Hand-held containers are compatible with conveyors, robotics, ASRS and other automation devices.



Product Protection

Reinforced sides and corners provide added protection against breakage.



Ergonomic Handling

Lightweight hand-held containers with deep ergonomic handles provide efficient, safe handling to protect workers and contents.