



MODEL 615

High Speed Fabric Roll-Up Door

■ ENHANCED PRODUCTIVITY

With opening speeds up to 100" per second, the 615 fabric roll up door will provide increased material handling while minimizing air exchange and increasing energy efficiencies. Speed is fully adjustable and allows the user to tailor the door operation to exacting requirements.

■ ADVANCED TECHNOLOGIES

Reliable, low maintenance, high efficiency AC direct drive operator has no clutches or brakes to maintain or replace. Our standard frequency inverter, in conjunction with absolute encoder technology and digital controller, allows for smooth, quiet soft start/soft stop high speed door operation. With a gear driven push-pull technology the 615 curtain is always fully retained and sealed. Using flexible inverter technology, the user is allowed to choose from a variety of line side voltages.

■ INNOVATIVE DESIGN

Simple by design, the 615 incorporates an automatic curtain reset feature that requires no special tools or downtime. If the curtain becomes displaced from its track in either direction, it will automatically reset on the next upward cycle.

■ TIGHTEST SEAL

Utilizing a "soft seal" (no bottom bar) bottom edge, the curtain molds to your floor's contours. This combined with its unique low profile track that continuously retains the curtain, the 615 stops air infiltration from the ground up. Integrated track seals do not touch fabric curtain during door operation providing a virtually maintenance free design.

■ LOW PROFILE

The 615 fabric roll up door requires only 5-1/2" of side room clearance and only 22" of standard head clearance making it one of the lowest profile doors in the industry.

■ SUPERIOR PERFORMANCE

As safe as it is reliable, the 615 fabric door has a soft bottom seal and wireless reversing edge with no bottom bar or extrusions to damage or replace. This simple, clean, maintenance free construction is complimented by a standard send and receive photo-eye and a manual override for opening without power.

■ UNMATCHED QUALIFICATIONS

With over 50 years of combined experience, our professional sales consulting team will ensure your mission-critical requirements, while maintaining our uncompromising dedication to quality and value added service.



Innovative Design. Superior Quality. Exceptional Value.

THE INDUSTRY'S UNPARALLELED DOOR SYSTEM OF CHOICE

Enviro's high speed fabric roll-up door is designed, engineered and precision manufactured with over 40 years of experience partnering with today's leading cold storage companies across the country. The 615 fabric roll-up door combines a clean, attractive finish, while maintaining one of the smallest footprints in the industry. With a heavy-duty fabric curtain, high speed, soft bottom edge technology and a simple breakaway system with automatic reset, this door sets the standard for controlled environments.

Using cutting-edge technology and exacting criteria for quality, these doors have surpassed market demands. Our quest for uncompromising quality, and our steadfast commitment to meet our customer's ever-changing expectations, is evident in one of the most durable, personnel friendly, maintenance free roll-up door systems available in today's highly controlled environment marketplace.

THE LEADER IN COLD STORAGE DOOR INNOVATION

Enviro Doors | An ASI Technologies, Inc. Company
5848 North 95th Court | Milwaukee, WI 53225
PHONE: 414.464.6200 | FAX: 414.464.9863 | TOLL-FREE: 800.558.7068
www.envirodoors.com



enviro[®]
Cold Storage Doors

MODEL 615

High-Speed Fabric Roll-Up Door System

DESIGN AND CONSTRUCTION

DOOR SIZES

- Up to 18' wide x 18' high.
(Other sizes available - consult factory.)

PANEL CONSTRUCTION

- Multi-filament PVC coated curtain.
- Blue or orange color curtain standard.
(Other colors available upon request.)
- No windknobs, windbars or tabs required.
- Soft bottom edge - no bottom bar or rigid profiles required.

FRAME AND SHROUD CONSTRUCTION

- Side guides constructed with structural channels in galvanized steel.
- Side frames designed for maximum durability and utilize a polyethylene guide.
- Fully retained curtain along complete vertical edges.

OPERATOR FEATURES

- Adjustable open speeds up to 100"/sec.
- High performance, high efficiency, soft start / soft stop, washdown rated 1 or 2 hp AC electric motor.
- Available in 208/230v single phase, or 208/230/460v three phase power.
- Absolute encoder controlled - washdown rated.
- NEMA 4 rated enclosure with clear view vision.

PERFORMANCE FEATURES

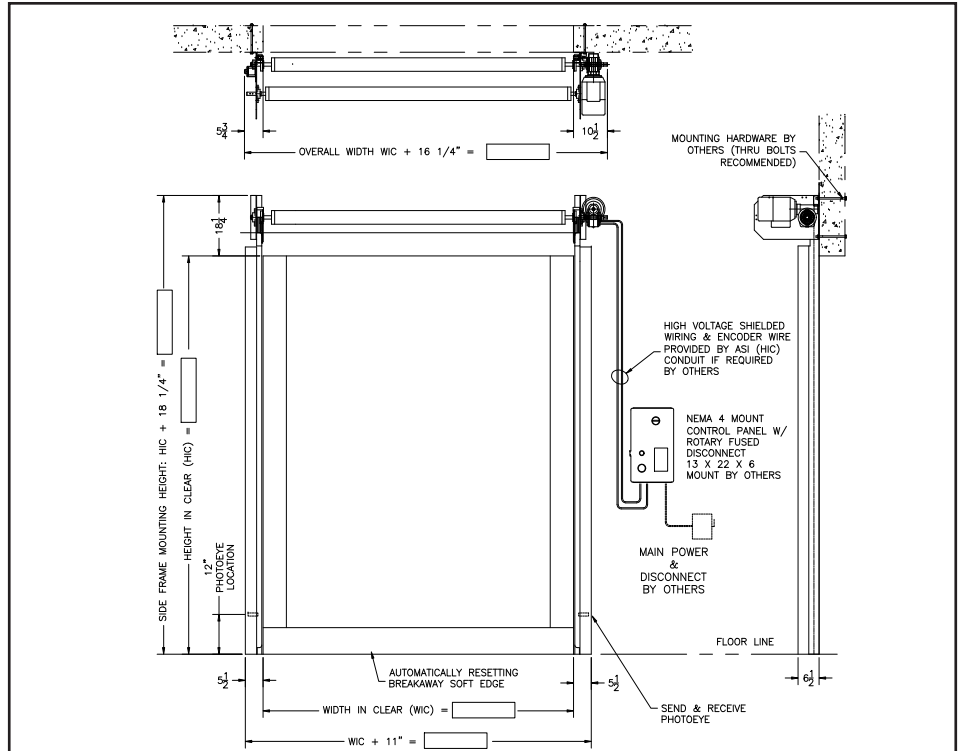
- Breakaway curtain with automatic reset from either direction.
- Send and receive reversing photo-eye.
- Soft bottom edge with wireless electronic reversing.
- Standard pushbutton to open and time delay to close.
- Manual motor override for opening without power.

WARRANTY

- One year limited warranty on all components.
- ASI reserves the right to modify specifications without notice.

OPTIONS

- Pull cords.
- Remote push buttons.
- Photo-eyes - actuator or reversing.
- Radio control - single or multi-channel receiver.
- Loop detector.
- Motion detector.
- Custom designed interlocking system.
- Pre-announce to close kit (light/alarm/ or combo).
- Stainless steel construction.
- Non-heated and heated air circulation systems.
- Barrel and operator shrouds.
- Window.
- Insulated curtain.
- Heat package.



Soft Bottom Edge

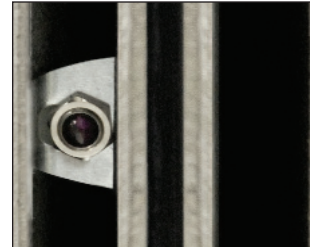
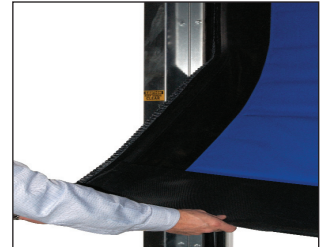
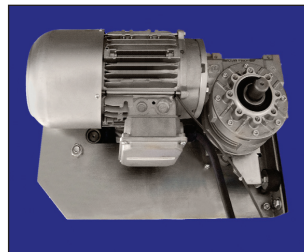


Photo-Eye



Breakaway with Auto Reset

- The ultimate safety for personnel.
- Provides for optimal sealing.
- Upon photo-eye interruption, door will return to full open position.
- Impactable in either direction.
- Curtain will automatically reset on next upward cycle.



Direct Shaft Drive



Low Profile Track

- High speed opening up to 100"/sec.
- High performance AC drive.
- Absolute encoder controlled.
- Door requires only 5-1/2" of side clearance.

THE LEADER IN COLD STORAGE DOOR INNOVATION

Enviro Doors | An ASI Technologies, Inc. Company

5848 North 95th Court | Milwaukee, WI 53225

PHONE: 414.464.6200 | FAX: 414.464.9863 | TOLL-FREE: 800.558.7068

www.envirodoors.com

615 1/18/11