

How to attach perforated flaps to the Caliber

Below are instructions for proper attachment of a CDF form-fit liner to a Caliber bin.



View of a filled form-fit liner in the Caliber bin.



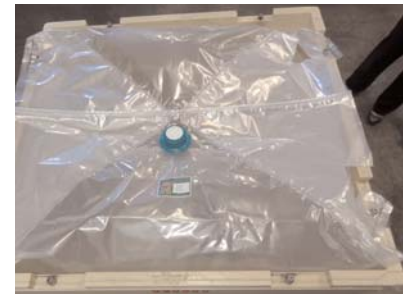
Tear the perforated flap on each corner of the form-fit liner.



Close up of the torn perforated flap.



Attach the perforated flap to the locking post on the Caliber bin.



View of a filled form-fit liner with the perforated flaps attached to the locking posts on the Caliber bin.



(877) 247-3834 - dacocorp.com



CDF Corporation · 77 Industrial Park Road · Plymouth, MA · 02360
800.443.1920 · www.cdf1.com