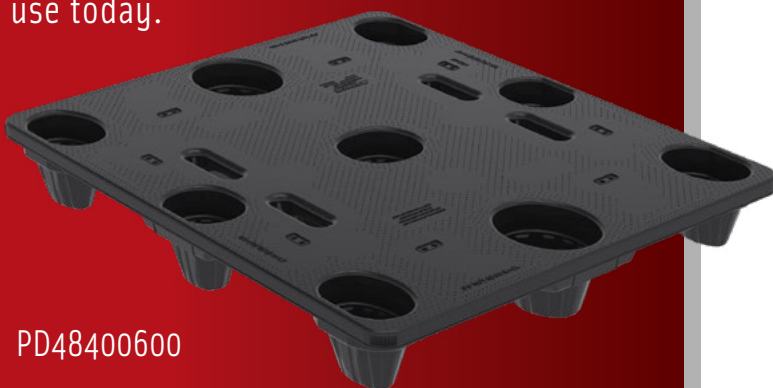


DISTRIBUTION PALLET

The proven balance of strength and versatility

Buckhorn's 48" x 40" nestable distribution pallet optimizes storage, shipping and handling for the grocery, retail and wholesale food distribution markets. It is an economical and sustainable alternative to wood. The pallet's two-piece welded construction offers a superior strength-to-weight ratio. The feet have a channeled design for added durability. It is lightweight, easy to clean and provides higher load capacity than other pallets in use today.



PD48400600



Delivering Value Beyond the Box

- High dynamic load capacity of 3,000 lbs.
- Superior nest ratio—1,260 empty pallets fit in a 53' trailer
- Compatible with other nestable pallets
- Hundreds of round trips for lower overall cost-per-trip
- Non-slip surface minimizes product movement
- Optional perimeter lip and anti-skid grommets help prevent load shifting
- Ergonomic top deck hand holes for easy lifting
- Capture corners grip stretch wrap with ease
- Superior resistance to moisture and most chemicals
- Four-way entry accommodates forklifts and pallet jacks
- Use with temperatures of -20° to 120° F
- Customization and identification options available
- Backed by a one-year limited warranty
- 100% recyclable HDPE

For more information, contact your local Buckhorn sales representative
or call **1.800-543-4454**.

PRODUCT SPECIFICATIONS		PD48400600
	External Dimensions	
	Length	48.0"
	Width	40.0"
	Height	6.4"
	Internal Dimensions	
	Length	48.0"
	Width	40.0"
	Tare Weight	26.0 lbs.
	Capacity*	
	Static Weight	30,000 lbs.
	Dynamic Weight	3,000 lbs.
	Fork Tunnel Dimensions—48" Side	
	Length	11.7"
	Height	3.5"
	Fork Tunnel Dimensions—40" Side	
	Length	11.2"
	Height	3.5"
	Shipping	
	Nest Ratio	2.6:1
	53' Truck Capacity	1,260

*Capacity is based on evenly distributed loads and is dependent upon application and use environment. Elevated temperatures and concentrated loads can affect capacity. Check with Buckhorn for suitability in your application. Specifications subject to change without notice. All dimensions are approximate.

DACO

(877) 247-3834 - dacocorp.com

BUCKHORN®