



DuraShutter™

Rolling Counter Shutter Doors

DuraShutter counter shutters are an ideal solution for retail and commercial facilities, where security, appearance and dependability are important.



Rugged

Constructed from commercial quality materials, DuraShutter assures a long life cycle and require little to no maintenance, delivering the reliability and durability to meet or exceed the requirements of daily use.



Versatile

Designed for a variety of common applications, DuraShutter is available in steel, perforated steel, stainless steel and aluminum curtains, along with a wide variety of quality features and options such as 188 powder coat colors and integral frames.



Secure

DuraShutter secures openings above counters and similar finished openings with interlocking roll formed slats with endlocks riveted to ends of alternate slats. With the added protection of cylinder or thumb turn locks you can be certain your building will be safe and secure.

DuraShutter™

Application Guide

DuraShutter	
Cafeteria/Concessions	●
High Security	◐
Pharmacy	●
Shopping Mall/Retail	●
Healthcare Facilities	●
Educational Facilities	●
Stadiums	●
Service Window Openings	●

● Best ◐ Good



DuraShutter

Color/Finish Options

DuraShutter



The swatches shown on monitors and printed materials may vary from the actual color. For a true representation of the color, visit your local Raynor Dealer.

*Optional Upgrades



188 ArmorBrite™ Colors*

Choose your color! Nearly every Raynor rolling door component (curtain slats, bottom bars, guides, hoods and head plates) can be powder coated in any of 188 colors for an attractive appearance and exceptional durability.

Standard Features

Every DuraShutter counter shutter is built for superior performance and includes the features listed below.



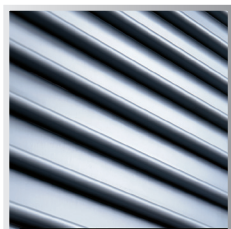
Curtain Hood

Curtain hoods are square and designed for maximum structural rigidity.



Guides

Guides constructed of steel, stainless steel or aluminum, allow for face or jamb mounting.



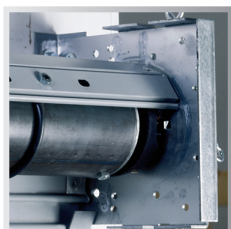
Curtain

All DuraShutter curtains are constructed with heavy-duty steel, stainless steel or aluminum flat slats.



Bottom Bar

Curtain bottoms are constructed of steel, aluminum or stainless steel with a foam edge to protect the sill.



Counterbalance System

A torsion-spring-operated system, enclosed in a structural steel barrel, effectively counterbalances the door for a minimum of 7,500 cycles.



Locks

Cylinder or thumb-turn locks help keep your building secure. Thumb-turn locks are standard on shutters with manual or crank operation.

Model Options and Upgrades



Brush Seals

A brush-type guide (shown) or header seal increases energy efficiency.

Integral Frame Options

Offered in built-in and slip-in styles, Raynor integral frame counter shutters provide maximum strength and security with metal frames, shutters and sills that are factory-assembled as a complete unit. Both options are available with manual, crank or motor operation. Each offers a clean appearance and unique advantages, depending on your application needs.



Slip-in Style Frames

For your existing walls, the slip-in style frames are a sleek and easy solution.

Shown: DuraShutter in stainless steel



Built-in Style Frames

For masonry walls not yet constructed, built-in style frames provide a clean, finished appearance.

Shown: DuraShutter with optional ArmorBrite Finish

Operation Methods



Crank Operation

Hand-crank operation is available on all DuraShutter counter shutters.



Eclipse™ Tube Motors

Ideal for easy and convenient operation, and concealed inside the barrel assembly, this quiet torque-rated motor runs smoothly at the touch of a button.



ControlHoist™ Operator

For larger sized counter shutters, choose a reliable ½ hp ControlHoist™ jackshaft operator.



MGJ Operator

½ hp, jackshaft operator, perfect for operating counter and smaller sized rolling and grille doors.

Model	Slat Profile	Slat Material (Thickness)	Slat Sizes	Maximum Sizes	Maximum Sizes (Integral Frame Option)	Color/Finishes	Guides
CP	Flat	Steel (22 gauge)	1-1/4" x 1/2"	20' Width 10' Height (max. 120 sq. ft.)	11'6" Width 5'6" Height 4½" - 12" Wall Thickness	White, Gray, Tan or ArmorBrite™ Powder Coated	Steel
CPP	Perforated Flat						
CA	Flat	Aluminum (.05")		20' Width 10' Height (max. 120 sq. ft.)	11'6" Width 6'6" Height 4½" - 12" Wall Thickness	Clear Anodized Bronze Aluminum	Aluminum
CSS		Stainless Steel (22 gauge)				Stainless Steel #4	Stainless Steel

NOTE: Contact factory for special sizes.

LIMITED WARRANTY: DuraShutter counter shutters carry a 1-year limited warranty. See your local Raynor Dealer for complete details.

Commercial Operators



ControlHoist

Raynor ControlHoist™ (with solid state logic board control) operator is available with a variety of motor options, voltages, and phase combinations for any commercial or industrial application. Contact your local Raynor Authorized Dealer to determine the best operator and accessories for your door's size and usage.

Warranty

3 years with purchase of door
2 years with purchase of operator only

Raynor Advantage

Easily configure the correct operator with a door for a total Raynor branded system with an extended extra year of warranty.

Raynor Door Options

Raynor also offers a full line of sectional, rolling, fire, high performance and traffic doors, as well as, security grilles. See your Raynor Dealer or visit www.raynor.com for more information.



FireCoil™



RapidCoil™, RC300



DuraCoil™

Professional Installation and Service

Depend on your Raynor Dealer

When you select Raynor, you're not just getting a superior garage door - you're also getting professional garage door installation and service expertise.

Every Raynor garage door is installed by a trained Raynor professional, and that means added benefits for you. First, you won't have to deal with it yourself. Second, because it's done right the first time, your door will deliver performance and reliability from the day it's installed. Your technician will check your door for everything from safety to performance and appearance. Trust your Raynor garage door to someone who knows it better than anyone else, your professional Raynor Dealer.

Follow Us



P.O. Box 448, 1101 East River Rd.
Dixon, IL 61021-0448
1-800-4-RAYNOR (472-9667)

Exclusively Distributed by:

DACO

(877) 247-3834 - dacocorp.com