



Goff's Climate Curtain Walls

Separate your facility climates to maximize efficiency.

Goff's Climate Curtain Walls dramatically reduce temperature loss with double paneled vinyl curtains, lined with a double bubble foil insulation thermal barrier, providing flexible, climate control isolation.

Reduce energy costs while maximizing your facility's space.

Climate Curtain Walls are designed to provide your facility with the convenience of space separation and temperature control without permanent or costly construction. Lower your energy costs and efficiently control your facility's climate by sealing off your space with easy to move insulated curtains.

Goff's Climate Curtain Walls are the best option for effective temperature control needs.

Control climate in temperature sensitive areas.

Whether you need to close off a corner of a room or build a complete climate controlled 4-sided room, our insulated curtains are custom made and attach together with a 6" overlap to eliminate air infiltration where the panels connect together.

Flexible design made custom for your facility.

Made with the unique ability to collapse to 1/3rd of the opening width and slide out of the way, insulated curtains provide the flexibility to move machinery, equipment, and people in and out of temperature controlled areas.

Make space utilization easy.

Use insulated curtains to efficiently utilize your freezer & cooler areas, loading docks, or any warehouse space that needs to be climate controlled.



Mounting hardware is also available for increased flexibility & efficiency.

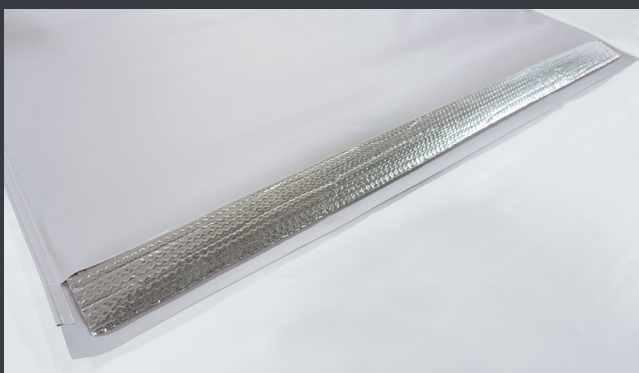
Goff's Climate Curtain Walls can be supplied with track & hardware to fit your dimensions & layout, with the ability to be reconfigured as needed, providing smooth, easy movement of all curtain systems for years to come.

- **Track & hardware is built with durable heavy-duty 16 gauge galvanized steel.**
- **Goff's track & connector system** allows for multiple mounting methods including suspended from the ceiling, face mounted on the wall, and floor supported.



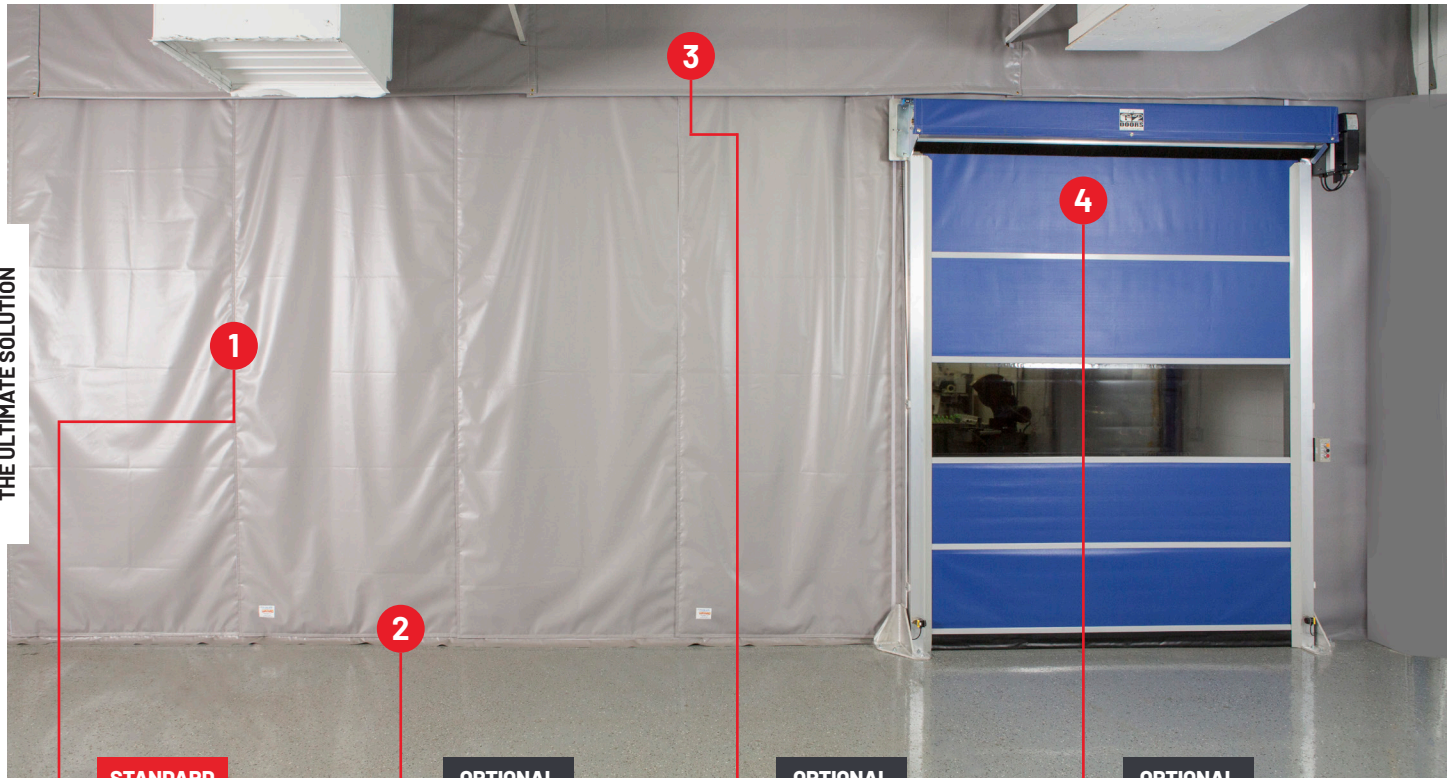
How we control temperature:

Lined with a thermal barrier, consisting of two layers of polyethylene industrialized air bubbles that are bonded between two layers of aluminum polyester film that will not compress, collapse or disintegrate over time, Goff's Climate Curtain Walls **provide an "R" value of R-8 with a single panel, maintaining space temperature and maximizing energy efficiency.**



Options and accessories to increase your ROI.

Climate Curtain Walls can be custom made up to 100' high in any width, and work best with optional accessories such as the upper thermal valance and lower floor sweeps. Utilizing both gives your climate controlled room a full and complete enclosure securing any cracks or holes that come from your building's structure. They easily velcro onto your insulated curtain and are custom manufactured to fit your building's specific needs.



THE ULTIMATE SOLUTION

STANDARD

1. Curtain Overlap:

Velcro sewn along both edges of each climate curtain allows for connecting curtains to one another, reducing temperature loss at the connection points.

OPTIONAL

2. Floor Sweep:

Optional double sided floor sweep attaches to the bottom edge of the curtain to create a complete seal at the floor, especially on uneven floors.

OPTIONAL

3. Upper Valance Panel:

Optional thermal valance velcros to the track to seal open areas above and below the track creating full space coverage, ensuring maximum climate control capabilities.

OPTIONAL

4. Complete Integration:

Easily implement other Goff's products into your curtain wall system such as a Structural Door Support Frame & G2 Door to build a complete & functional room without permanent or costly construction.

ADDITIONAL OPTIONS



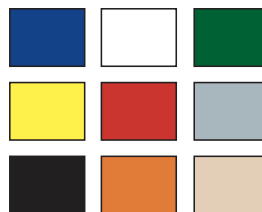
Wind Ties

Secure your curtain walls in cases where wind or negative pressure is present. Available in standard and heavy duty styles.



Custom Branding

Personalize your curtain with your company logo or slogan. Custom priced based on size, colors and quantity.



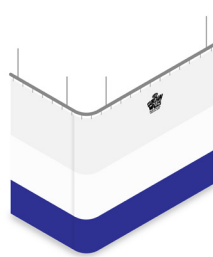
18 oz Vinyl Color Options:

Choose between our nine 18 oz color options to match your company's branding at no additional cost.



Single Curtain:

Seal off a desired cooler area in your building with a single Climate Curtain Wall.



Two-Sided Curtain:

Create an L-shaped partition to segment off a corner of your building as separate space.



Three-Sided Curtain:

Add a 3-sided insulated curtain to one of your permanent building walls to create a controlled temperature area.

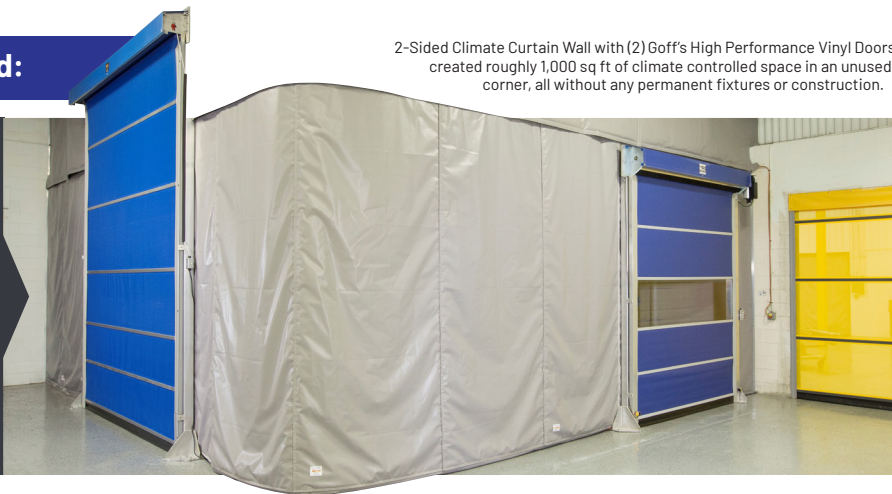


Four-Sided Curtain:

Build an entirely stand-alone room using a 4-sided insulated curtain wall for modular space design.

Create separate space when needed:

Forget building permanent walls! Create entire rooms within your facility using Goff's Climate Curtain Walls, paired with our easy-to-use high performance vinyl doors. Whether you're in and out of your cooler space all day, or only need occasional access, we've got the solution you need to make your space energy efficient.



2-Sided Climate Curtain Wall with (2) Goff's High Performance Vinyl Doors created roughly 1,000 sq ft of climate controlled space in an unused corner, all without any permanent fixtures or construction.

Goff's delivers more than you expected.

With over 30 years of experience, the Goff's team is committed to delivering the most reliable and innovative solutions to improve efficiency in your facility.

(800) 234-0337 | sales@goffscw.com

Easily Installed

Expert installation is available for rapid implementation, or included instructions can guide your team through our easy to set up system. Installation can be scheduled during down time for minimal facility interruption.

Guaranteed to Last

Every Goff's Climate Curtain Wall system comes with a 5 year warranty from failure in normal use due to defects in material/workmanship, and a lifetime warranty on all track, rollers and hardware.

Here to Help

The Goff's Customer Care & Tech Support team is available to answer any questions you have about your Climate Curtain Wall system, making sure you get the most out of your investment at your facility.



(877) 247-3834 - dacocorp.com