

HARSH ENVIRONMENTS AVAILABLE UP TO 16' x 16'

Goff's Harsh Guard Doors

Goff's G2 Harsh Guard door is built to withstand the harshest environments. Built with moisture-resistant materials, and backed by a strong warranty, Harsh Guard is designed to stand the test of time and keep your harsh spaces up and running.

- **Travels at 28"/sec**, up to 120 cycles/hour
- **NEMA4X Intelligent Control System with Smart Touch Screen interface**
- **IP66 VFD Controlled Direct Drive Motor**
- **IP67 Photo Eye Safety Sensor**
- **Ideal Option for your Medium to High Traffic in Moisture or Chemical-Prone Areas.**



10' x 10' door pictured with black & vision panels

STANDARD FEATURES:	Full-Width Roll Cover	Auto-Reset After Impact	Full-Width Window	Auto-Close Door Timer	Replaceable Door Panels	Fiberglass Wind Bars
---------------------------	-----------------------	-------------------------	-------------------	-----------------------	-------------------------	----------------------



Goff's Intelligent Control System:

Motor operated via VFD motor controller to maximize efficiency & longevity of hardware.

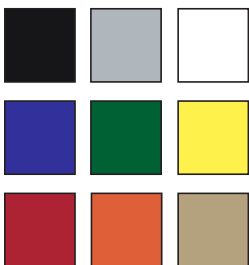
Smart Touch Screen features time-to-close, PLC input monitoring, and remote diagnostics.

Ships assembled and **pre-wired in a NEMA4X enclosure** to simplify start-up.

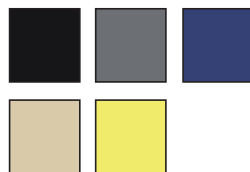
Input Voltage Compatibility: 120V1P, 208V1P, 230V3P, 480V3P

Options & Accessories

18oz Vinyl Colors:
(standard)



26 oz Vinyl Colors:
(optional)



Other custom colors available with extended lead times.



Wide range of safety sensor and control method options available on request.



Available in Face Mount, Projection Mount, or freestanding via Goff's Door Support Frame.