

IBC Accessories



IC-2046
2" Push Lock Cap



IC-9012
2" Combo Clip



IC-9056
CDF Gland Adapter



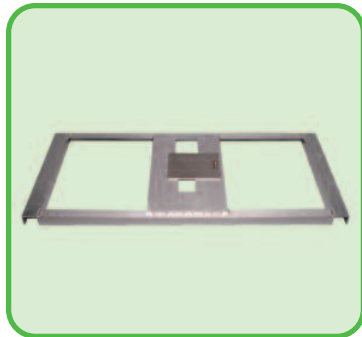
IC-9060
Red Lid Seal Clips (Kit)



IC-9061
Tamper Evident Hatch Caps



IC-9022
PVC Universal Fill Bridge



IC-9040
Aluminum Universal Fill Bridge



IC-9045
45" Winder System



IBC Accessories



IC-9133
Air-Assist Venturi System



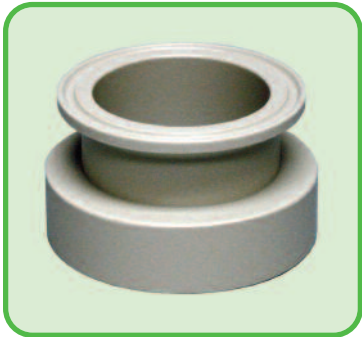
IC-2036 / IC-2037
V50 Valve / 2" BSP Adapter /
Cutter Pusher



IC-9011
2" Butterfly Valve Cam Adapter



IC-9017
2" Male BSP / Cam Adapter



IC-9018
S60 Female / 2" Tri-Clamp Adapter



IC-9129
2" BSP Male / 2" Tri-Clamp Adapter

CDF warrants that its products will be free from defects in material and workmanship for one-hundred eighty (180) days after the date of delivery. Warranty claims must be made in writing no later than five (5) business days after the expiration of the warranty period. CDF's obligations under this warranty are limited solely to replacement of such products as are proven to be defective after CDF's inspection. **Prior to use, the user shall independently determine the suitability of the products for the user's intended use and user assumes all risk and liability whatsoever in connection therewith.**

CDF EXPRESSLY DISCLAIMS AND EXCLUDES ANY AND ALL WARRANTIES, EXPRESSED OR IMPLIED, INCLUDING BUT NOT LIMITED TO IMPLIED WARRANTIES OF MERCHANTABILITY AND FITNESS FOR A PARTICULAR PURPOSE RELATING TO THE USE OR PERFORMANCE OF CDF PRODUCTS. CDF SHALL NOT BE LIABLE FOR PERSONAL INJURY OR PROPERTY DAMAGE UNLESS CAUSED SOLELY BY CDF'S NEGLIGENCE. CDF SHALL NOT BE LIABLE FOR LOSS OF PROFIT OR OTHER SPECIAL, INDIRECT, INCIDENTAL OR CONSEQUENTIAL DAMAGES ARISING OUT OF THE USE OF CDF PRODUCTS, REGARDLESS OF THE LEGAL THEORY ON WHICH THE CLAIM IS BASED AND EVEN IF CDF HAS BEEN ADVISED OF THE POSSIBILITY OF SUCH DAMAGES.